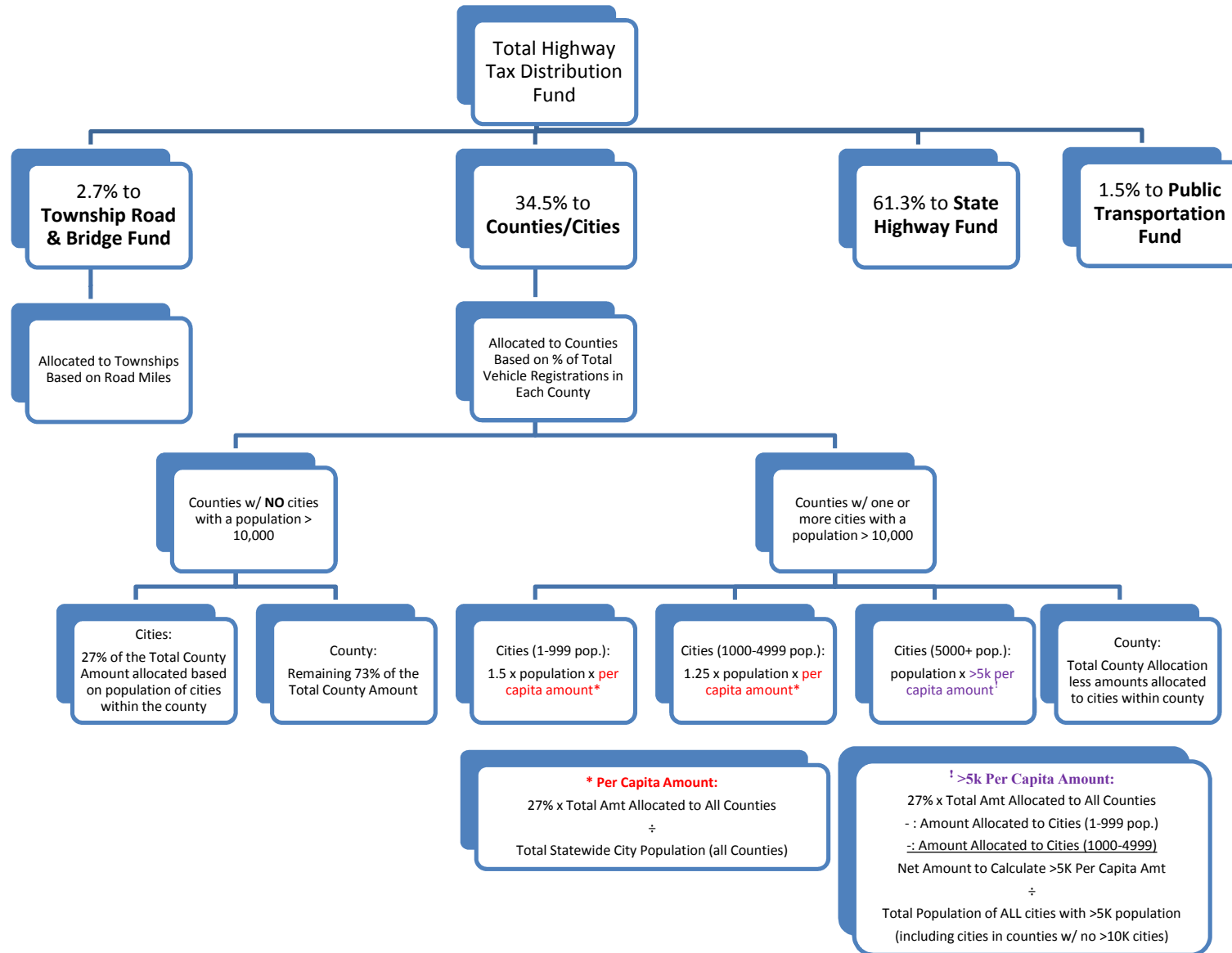


Highway Tax Distribution Fund

N.D.C.C. 54-27-19



*** Per Capita Amount:**

$$\frac{27\% \times \text{Total Amt Allocated to All Counties}}{\text{Total Statewide City Population (all Counties)}}$$

† >5k Per Capita Amount:

$$\frac{27\% \times \text{Total Amt Allocated to All Counties} - \text{Amount Allocated to Cities (1-999 pop.)} - \text{Amount Allocated to Cities (1000-4999)}}{\text{Net Amount to Calculate >5K Per Capita Amt} \div \text{Total Population of ALL cities with >5K population (including cities in counties w/ no >10K cities)}}$$